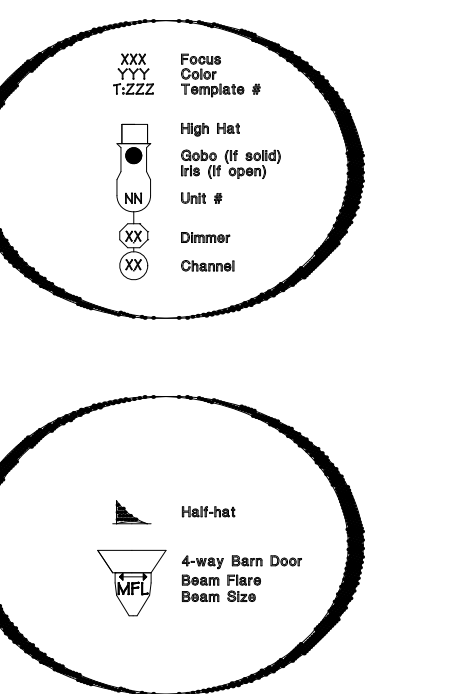
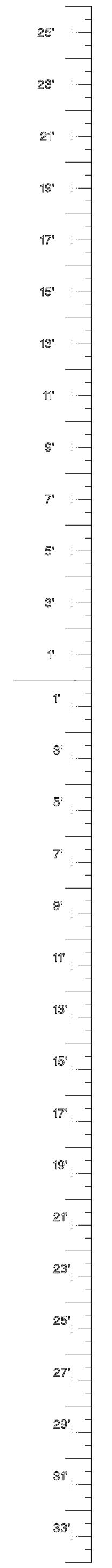
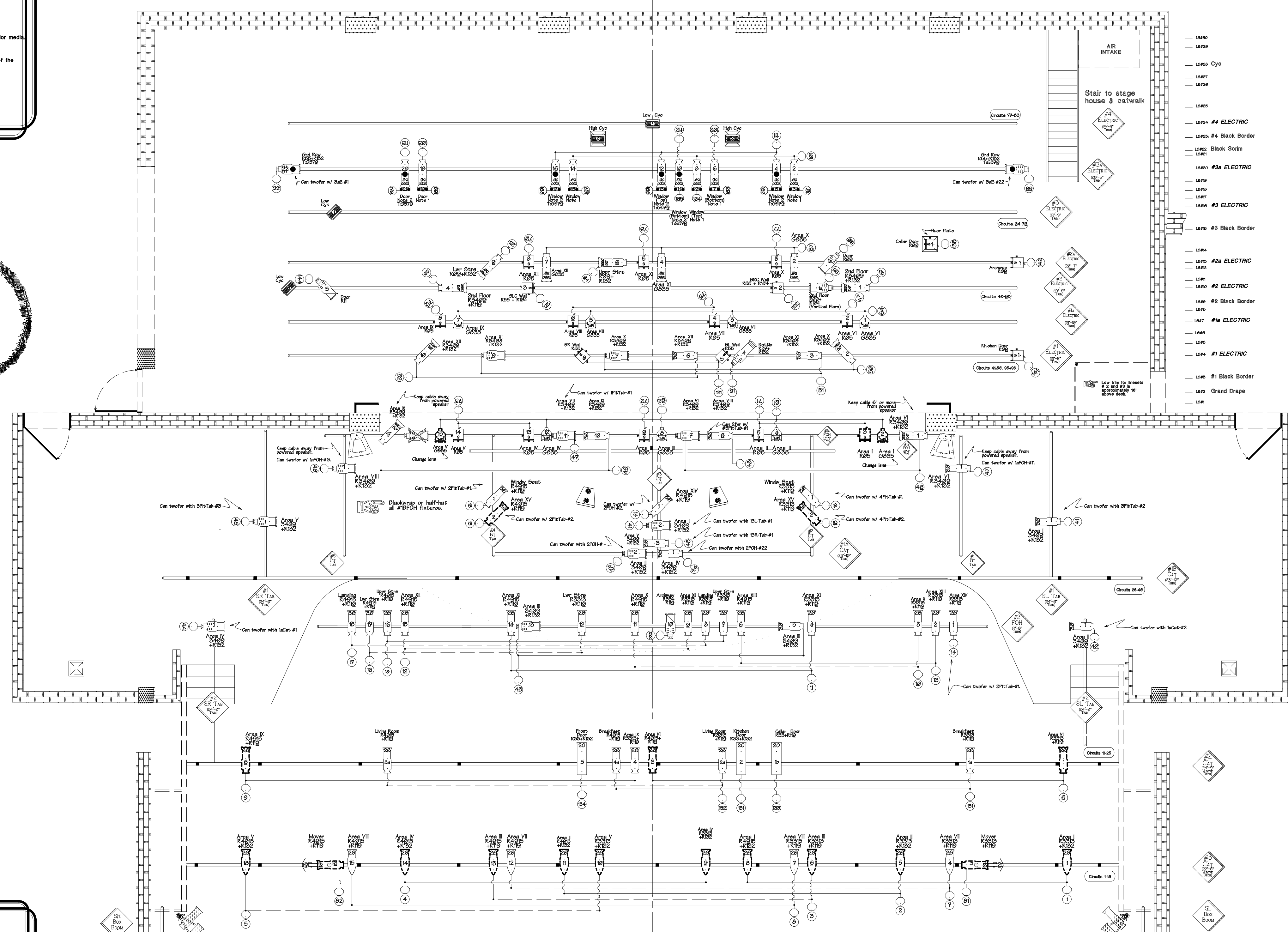
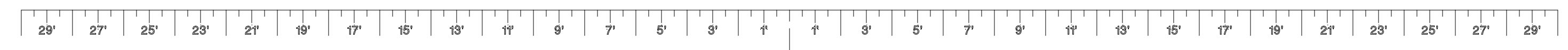


NOTES

- Indicated trims are pipe trims.
- Run all cables above head height - do not tape cables to floor across performer entrances.
- See designer for exact placement of all floor and set mounted units and booms.
- Fixture spacing is 14' unless otherwise noted or unless I forgot to otherwise note.
- Set all zooms to 25' field angle unless otherwise noted.
- Where Rosco Heat Shield is used, insert in discrete frame between lens and other color media.
- Gel and gobo manufacturers are (A)polo, (O)AM, (L)ee, and (R)osco.
- Half outs of diffusion, where called for, are vertical, on the onstage or upstage side of the frame, unless otherwise noted.
- Directional diffusion, where called for, is horizontal, unless otherwise noted.
- This drawing represents visual concepts and construction suggestions only. The lighting designer is unqualified to determine the electrical or structural appropriateness of the design and will not assume responsibility for improper engineering, construction or use.



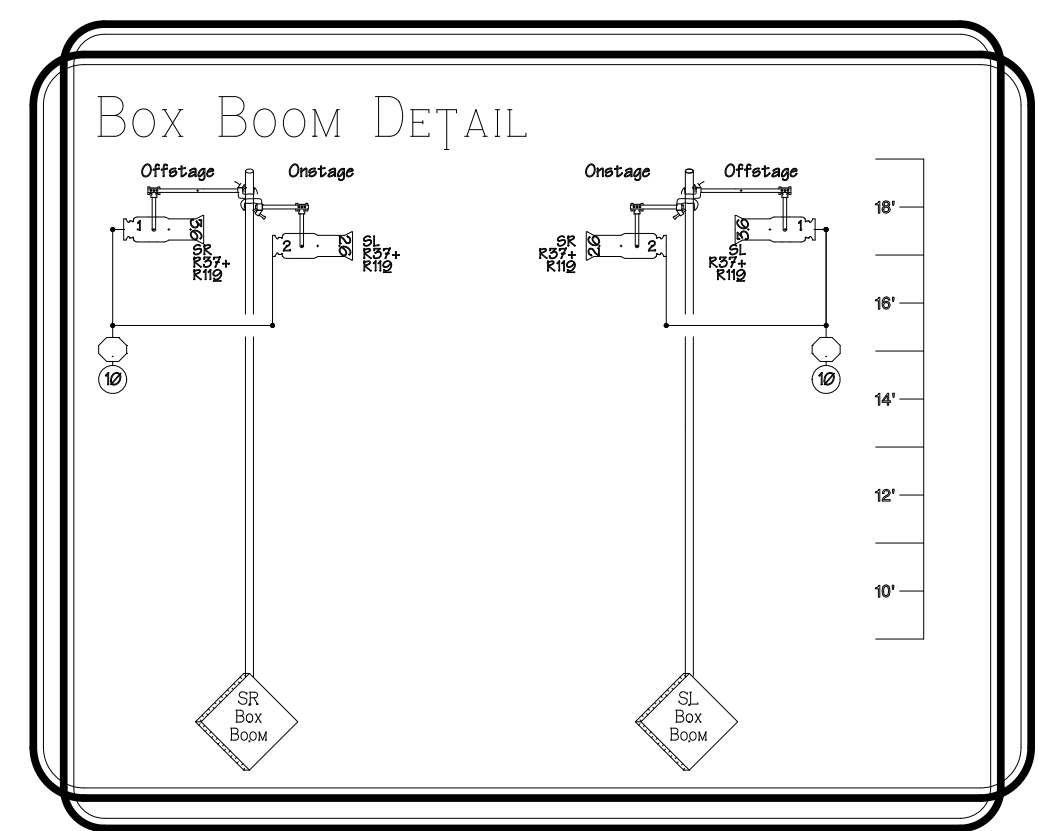
EDISON CIRCUITS

(Breaker Box Off SR)

#1 Cat	Breaker #7
#2 Cat	Breaker #9
SL Calper	Breaker #10
SR Calper	Breaker #8
#2 Cat Courtesy Outlet	Breaker #9
	(Switched OSL)

HOUSELIGHT CIRCUITS

Dimmer	Location
87	House Right - Far Back
88	House Left - Far Back
128	House Right Bay #1
129	House Left Bay #1
130	House Right - Mid Back
131	House Left - Mid Back
132	House Right Bay #2
133	House Left Bay #2
134	Blower Bay Center
135	Blower Bay Right
136	Blower Bay Left
137	Back House Center
138	Far House Left Bay #3
139	Blower Strip House Left
140	Blower Strip House Right
141	Entrance
142	Scrim



PRACTICALS, ET. AL.

(Not Drawn)

Wall Scones & Table Lamps: Single-Circuited
 Chandeliers: 3 Circuits
 Footlights: 1 Circuit

See paperwork for details.

Key to Symbols

ELIPSOIDS:

- ETC Source 4- 575W (Fixed angle as shown - 48 Bodes Available)
- ETC Source 4 94" 575W 14 B.
- ETC 18" Source 4 75W
- Alman 91.6-28 10041 - 575W (2 Available) 26 B.
- ETC 858 Zoom Field Angle AS Indicated (28 Available) 19.3 B.
- Strand SL-1 281 OLC - 575W (28 Available) 17.3 B.
- Alman 988Q 6x9 75W (1 Available) 18 B.
- Alman 988Q 6x12 75W (1 Available) 18 B.
- Alman 988Q 6x22 75W (1 Available) 18 B.

FRENELS AND PAR'S:

- Alman 650 6" Fresnel - 680W (1 Available) 7 B.
- Capitol 6" Fresnel (1 Available)
- LANE Edge 6" Fresnel 680W (4-35)
- ETC PAR 575W (2 Available) 7.5 B.
- 3" Fresnel 680W (1 Available) 5 B.
- MR-28 28" Fresnel (1 Available)
- Strand 18" Beam Projector - 680W (1 Available) 22 B.
- PARS (1-25)

Cycs / Strips / Floors / LEDs:

- 4" Bono 680W (4 Available) 6 B.
- Strand 28" Beam Projector - 680W (1 Available) 22 B.
- Alman Sky Cyc 2-Cat 18" WxCell (1 Available) 22 B.
- Strand 18" Beam Projector - 680W (1 Available) 22 B.

PRACTICALS:

- 680 Incandescent Lamp and socket furnished by designer - requires Edison connector on
- Chandelier
- Generic Practical
- Wall Sconce
- Table Lamp

MISCELLANEOUS:

- Rosco Image Pro
- Motor 510-Scan
- Rosco 1-Cue moving mirror (2 Available)
- DMX-Controlled Iris (Apolo or Rosco)
- Lawrence Dimmer Pack (2 x 680W) (2 Available)
- NEL Dimmer Pack (2 x 680W) (1 Available - furnished by designer)
- Show Pro SD-4182 Dimmer Pack (4 X 680W) (1 Available)
- ForeRunner or Chroma-C Border
- Doug Planner Border (1-Cue) (1 Available - furnished by designer)
- Gobo Rotator
- 12" Mirror Ball
- Monitor Speaker
- Floor Pocket
- LaMaire Hazer
- 8" Mirror Ball
- Lysian Midjet (2 Available)

LEGEND:

- Items in this legend reflect available inventory or units rented for previous productions and might not be used in this production.
- Items in **BOLD** are changes from previous versions of this plot.
- Items available 12-30 / 24-31 / 4-8
- Available inventory as of 11/14/17 at 11:00 AM

Light Plot

St. Michael's Playhouse
 Jeffrey E. Solberg, Lighting Designer
 Mark Flon Gordon, Director

Version: DESIGNER
 As of: 6/28/2014

Luke Gronholm, Master Electrician
 July, 2014

1/4" = 10'

Page #1 of 2
 (972) 238-7438
 jeh@stmic.com
 File Name: arsenic-rod-old-lace_box_plot.pdf